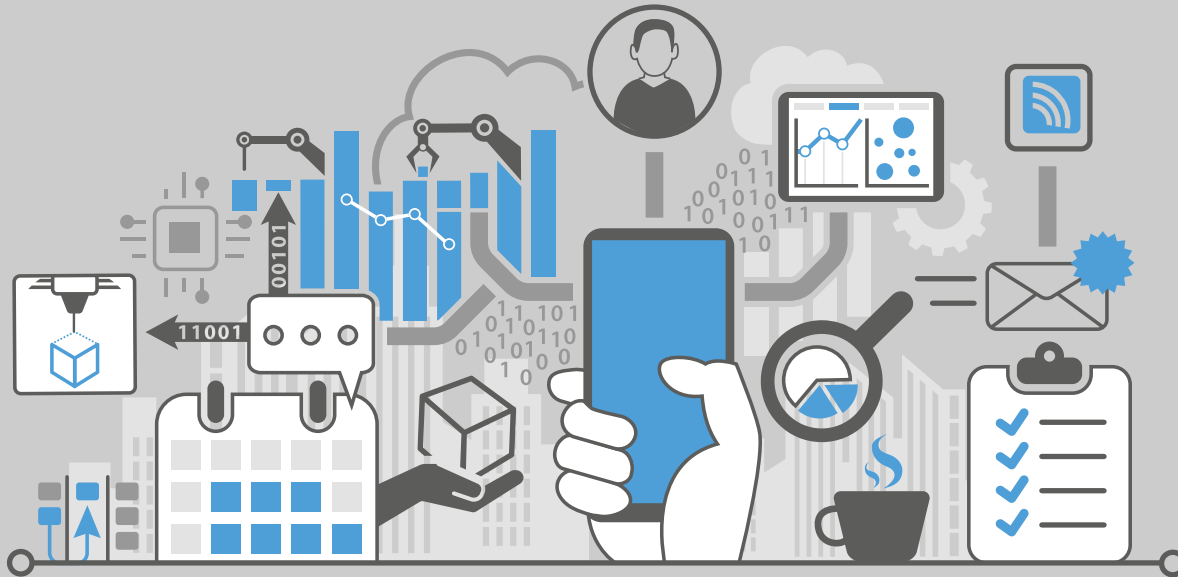




## Digital Labelling

for the Connected Industry

## Why Digitalise with troniTAG?



Processes are becoming interconnected, information is made transparent and people are supported by technology – the digital industry has long since arrived in companies' warehouses and production facilities. troniTAG provides you with comprehensive support in converting and networking your systems. We show you how to achieve maximum information transparency and process efficiency in production and

warehousing with digital labels. Through the intelligent labelling of storage locations, workstations, machines and containers with ESL labels, relevant information is centrally controlled and made available in real time. This results in consistent, digitally networked processes, reduced manual effort and a sustainable increase in efficiency along your entire value chain.

## The Digital Docket

Digitalisation offers clear advantages, especially for material bins and containers: manual labelling is no longer necessary, and the traditional docket is digitally reproduced. Containers can be clearly assigned to specific orders, customer requests can be marked directly, and errors can be visually blocked. Even the contents of the container can be clearly displayed on the ESL label – for maximum visibility and efficiency.



# Additional Applications & Benefits of Digital Labels in Production



## Applications:

- Digital storage location labelling with stock and item data
- Machine status displays (operation, fault, maintenance)
- Employee information displays directly at the workstation
- Real-time progress displays in manufacturing processes
- Digital labelling of material containers and production orders
- Visual quality and blocking indicators

## Benefits:

- Leaner, error-reduced production workflows
- Greater transparency for employees in real time
- Centralised, cross-system control of all information
- Updates within seconds and time-controlled
- Immediate visual alerts for errors and disruptions
- Reduction of paper and printing costs
- Minimisation of manual labelling and travel times
- Increased process reliability and faster response times



# Technical Overview



Real-time updates



Energy efficient



Interactive



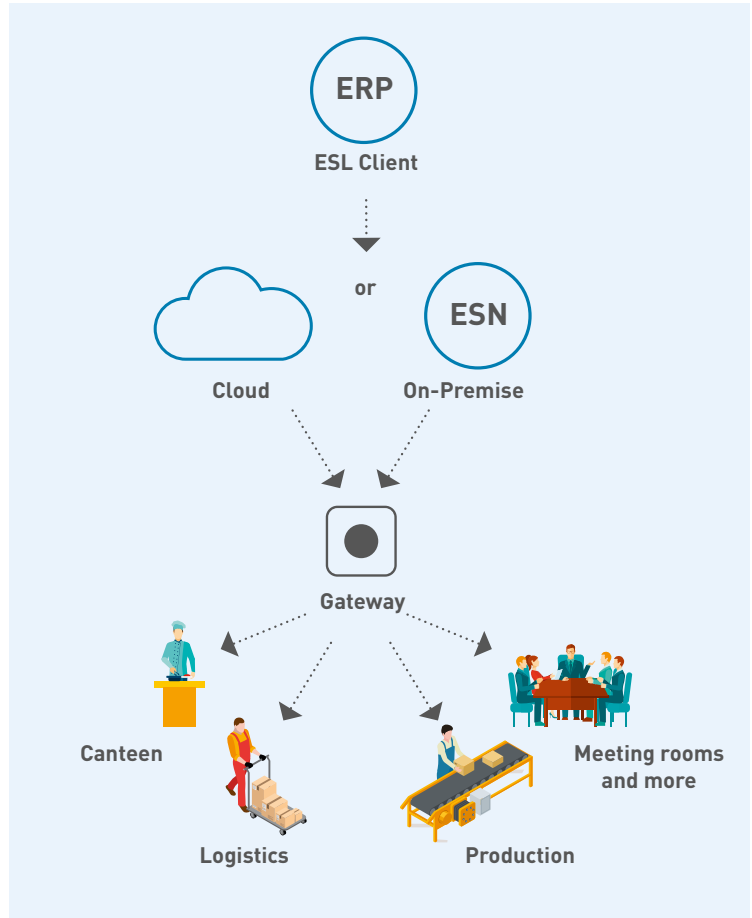
Individually  
customisable



Low costs



Centralised control



## ESL Client

The ESL Client enables access to system and status information such as label status, battery level, product assignment, and communication status. The system is self-monitoring and automatically reports deviations, connection problems, or critical system conditions.

## Cloud

As an alternative to local installation, the platform can be operated centrally in a cloud environment. This centralises maintenance, updates and administration. It also opens up further integration and networking options, for example across locations or with other cloud systems.

## On-Premise

The software can be operated locally on a server or computer on site. This enables self-sufficient system operation independent of a permanent internet connection and offers maximum control over the infrastructure.

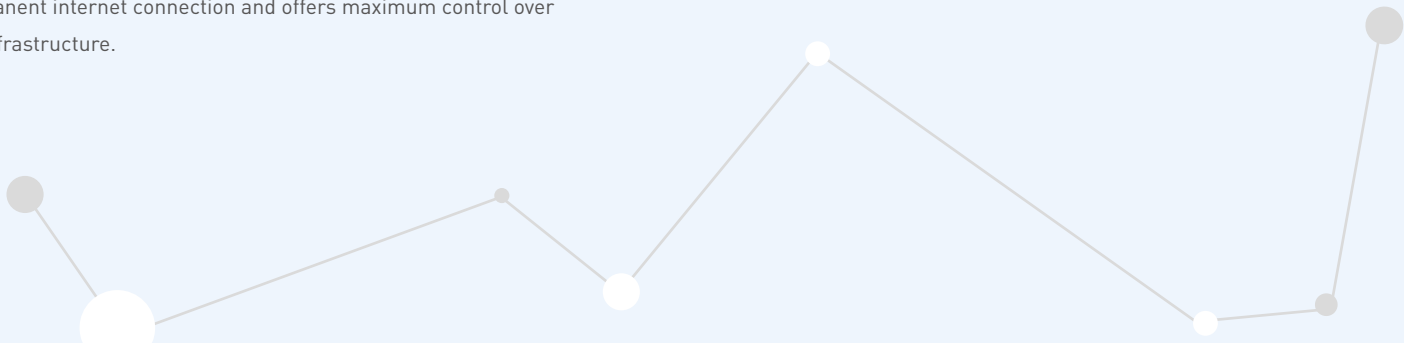
## Gateway

The gateway handles wireless communication between the platform and labels. It transmits content to the displays and receives status messages such as battery levels or error notifications.

## The Labels

The electronic labels display order, production and status information and communicate bidirectionally with the gateway. Using the layout designer. Display content can be flexibly and individually configured.

In addition, an ESL system can be used simultaneously in several application areas – whether as a digital door sign in offices and meeting rooms, for canteen signage or as an additional employee information system – flexible, centrally controlled and versatile.



# Our ZigBee-Based Series

## Air Series

### Key Features:

- NFC and QR code support
- Custom template design
- RGB LED indicator
- 2 programmable buttons
- Bidirectional wireless communication
- Encrypted data transmission
- Labels available for temperatures ranging from -25°C to 0°C and 0°C to 45°C
- Excellent readability thanks to a paper-like display
- Active battery and system monitoring
- Extensive mounting solutions



AIR13H



AIR15



AIR29



AIR29F



AIR42



AIR21



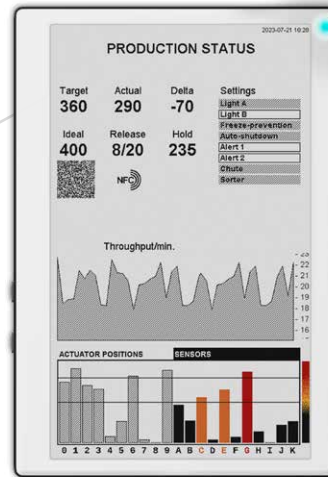
AIR26



AIR26F



AIR58



AIR75

# Our Bluetooth-Based ZB Series

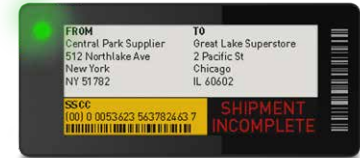
## ZB-Series

### Key features:

- IP67 optional
- Low-energy Bluetooth
- NFC and QR supported
- Controllable LEDs
- Customisable template design
- Bidirectional, wireless communication
- Encrypted data transmission
- Can be used at ambient temperatures ranging from -25° to 0° and from 0° to 40°
- Excellent readability thanks to a paper-like display
- Extensive mounting solutions



C18ZB



C29ZB



C21ZB



C26ZB



C42ZB

more sizes available

# Our Slim, Bluetooth-Based ZV Series

## ZV Series

### Key features:

- Slim design
- Low-energy Bluetooth
- NFC and QR supported
- Controllable LEDs
- Customisable template design
- Bidirectional, wireless communication
- Encrypted data transmission
- Can be used at ambient temperatures ranging from -25° to 0° and from 0° to 40°
- Excellent readability thanks to a paper-like display
- Extensive mounting solutions



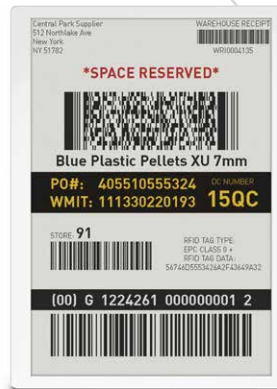
C42ZV



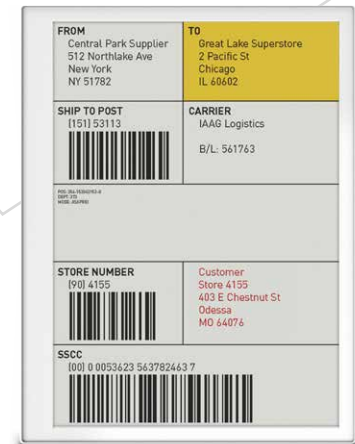
C58ZV



C75ZV



C116ZV



C133ZV

more sizes available

# troniTAG as Your Companion for Digital Transformation

troniTAG, your expert and reliable ESL partner,  
with a system that suits your needs.

## Our services:

- Choosing the right system
- Customised mountings
- On-site installation on request
- Interfaces for integration into your data landscape

## Request free of charge information from:



troniTAG GmbH  
Im Geer 15  
D-46419 Isselburg



info@tronitag.com



www.tronitag.com



+49 (0) 28 74 / 910-711

# troniTAG

For more information &  
catalogue, scan here

