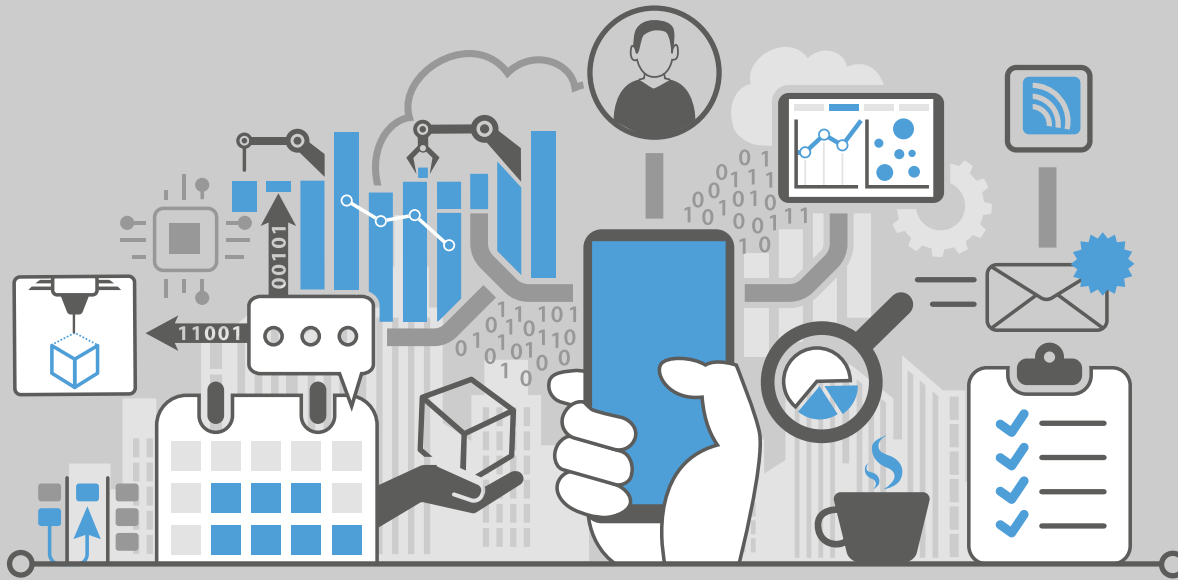


Industry 4.0 with troniTAG



Processes are networked, information becomes transparent and people are assisted by technology - Industry 4.0 is increasingly entering the warehousing and production areas of businesses.

troniTAG will assist you in joining Industry 4.0 with the integration of information and communication technology. With the help of **digital labels** in production and warehousing, storage locations, machines and crates can be labelled and marked **with information**. This achieves maximum **information transparency and efficiency**.

The Digital Docket

Especially for crates of material, digitalisation is an advantage. Manual labelling is dispensed with and the so-called docket, which documents each production process, becomes digital. Crates of material can be allocated to an order and customer specifications highlighted on the label. Even the contents list of the crate can be displayed on a digital label.





Other Production Applications for Digital Labels

- Marking storage locations with stock availability and product data
- Status indicators for machinery
- Employee information at a workstation
- Progress notifications for production processes



Advantages:

- Simplify production processes
- Increase information transparency for staff
- Centralised control of information
- Quick and timed transfer of information
- Prompt notification of faults or disruptions in production processes
- Reduced costs for labelling storage locations with stock and product data

We offer the following label sizes in our range:



↓ ↓ ↓ ↓ ↓ ↓ ↓

BL15 BL21 BL29 BL27 BL42 BL58 BL75

Technical Details

Label

Depictions of orders and production information as well as communication with the gateway. The display on the labels can be configured with the template designer to display: product information, special information such as order status, production info, material info, graphics, service status, etc.

ESL-Software

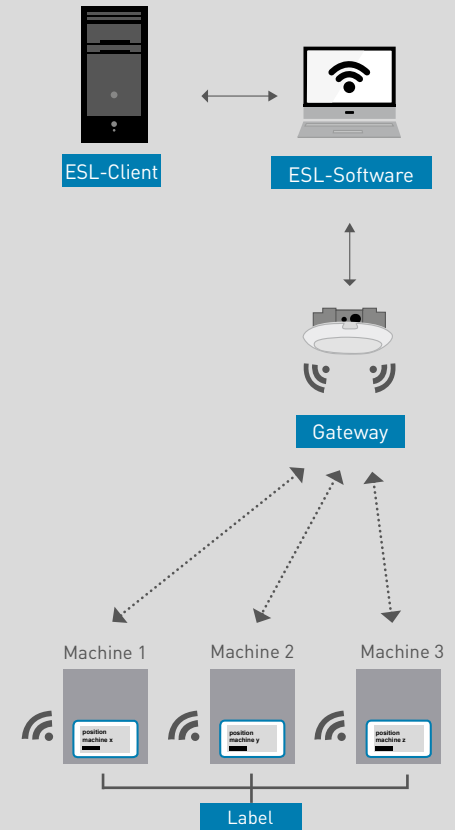
The ESL software is controlled centrally and the data transmitted to the gateway.

ESL-Client

With the ESL client, system information can be called up (label and battery status, connected products, etc.). This means the whole system is self-monitoring and can notify you of any problems.

Gateway

The gateway sends information to the labels and recognises battery status, error messages and network activations from the labels.



troniTAG as Your Companion to Industry 4.0

troniTAG offers you electronic labels with advanced technology from LG Innotek and integration in to warehousing and production.

With years of experience in digital signage we are a reliable partner in the industry.

Request free of charge information from:



troniTAG GmbH
Im Geer 15
D-46419 Isselburg



info@tronitag.com



www.tronitag.com



+49 (0) 28 74 / 910-711

troniTAG

