

# troniTAG

the new  
way of  
labeling



ENGLISH



## Who is troniTAG?

**troniTAG is your point of call for conversion to digital labels:  
from retail to industry, we are your full service partner!**

As a sister company of VKF Renzel and full service provider we can offer you a complete system consisting of hardware, programming and fixings from our own production. In addition we are at your side with knowledge and know-how to support you with good ideas for realising your project.

### **Retail, Industry, Logistics**

Whether you're in high street retail, industry, logistics or a corner chemist - as a multisystem provider we can advise you which applications for digital labels are suitable for your business. We can ensure when looking for an appropriate system that the ESL solution is suited to your requirements. In addition we will support you to find the right fixings. Our team of programmers will look after the integration of our systems in your data landscape or will develop special tools for you. Together we will accompany you on your journey to digitalisation and all from 20 locations worldwide.

## Digitalisation

### **Lead instead of follow!**

Begin now with the digitalisation of your business and profit from tailor-made solutions that will make your value chain future orientated and highly competitive.

Processes will be optimised in that a quick information exchange makes for time saved, a reduction in errors and increased safety. Comfortable handling of even complex tasks is made possible.



Realtime updates



Low costs



Central control

**If you want to digitalise then get in touch with us. We will be happy to advise you!**



## How do digital ePaper systems work?

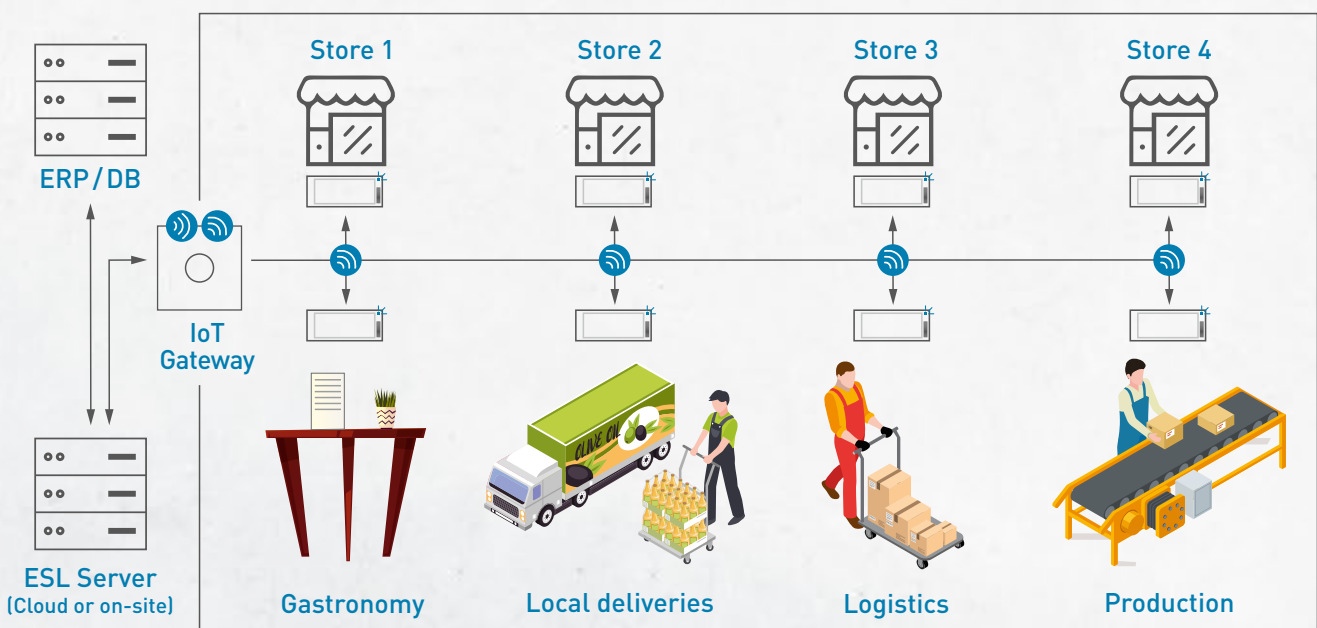
With our digital ePaper labels, also known in retail as ESL labels, data and information can be brought to digital paper fully automated in the blink of an eye. New text and graphics at any time, cable free and encrypted, to display your products, stock levels, production processes or staff information. Define the design and content of your label from a PC and draw up layouts with pictures, text and scannable barcodes.

Connected to your stock management or ERP software, you can control content and templates on each label fully automated. In addition customers and staff with NFC enabled devices such as smartphones or PDAs can call up further information from the ESL tag.

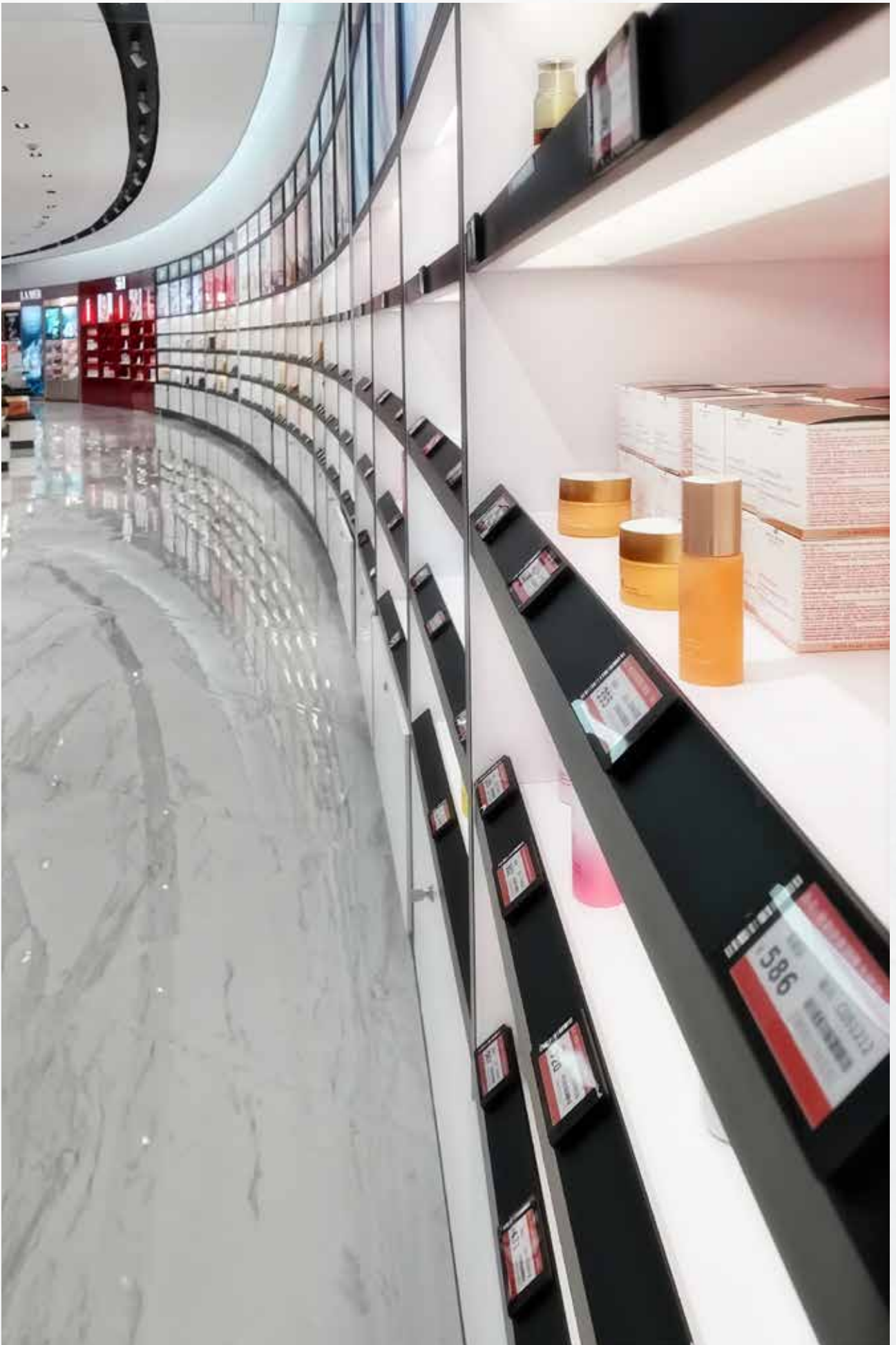
Monitor the system, even for multiple sites, from one central location.

The radio communication of the system is reliable, the tags are robust and thanks to ePaper technology the last received information will continue to be displayed even if there is a total outage of systems on site.

Digitalisation is a complex and dynamic topic which brings with it many possibilities. With our years of experience in retail and in the industry we will help you to find the right system. You can rely on our support!



Functional diagram of data communication



## Our ZB and ZV Range

Using modern technology, the Z range sets itself apart from the market and sets new standards for speed of information transfer. The Z range was developed to deal with growing demand particularly within industry. The system combines the advantages of wireless and cloud structure so is prepared for future technological developments. With our Z range you can determine the architecture yourself choose between our modern cloud, a central installation in your company headquarters or a local installation. The ZB and ZV labels are differentiated mainly in that the ZB label is fitted with a front panel to offer additional protection and the ZV label is not fitted with this panel to minimise reflection.

### ZV Characteristics

- slim design
- supports NFC and QR codes
- sizes 1.5" - 13.1"
- exchangeable batteries
- controllable LEDs

### ZB Characteristics

- ultra slim design 7.5 mm
- IP67 optional
- supports NFC and QR codes
- sizes 1.8" - 7.5"
- exchangeable batteries
- controllable LEDs

2402 - 2480  
Mhz /  
79 channels

Transmission

AES128  
- HTTPS

Encryption



Bidirectional



## ZV / ZB Range

### ZV Range



C15ZV



C21ZV



C26ZV



C29ZV



C42ZV

### ZB Range



C18ZB



C21ZB



C26ZB



C29ZB



C42ZB

Other label sizes can be found in the adjacent table.

## Technical Details ZV / ZB Range

								
<b>C15ZV</b>	44.5 x 35.9 x 12.1 mm	200 x 200   27 x 27	B/W/R*	188 dpi	1x CR2450	✓	0-40 °C	✓
<b>C18ZV</b>	52.5 x 35.9 x 10.5 mm	224 x 168   36.1 x 27.1	B/W/R*	158 dpi	1x CR2450	✓	0-40 °C	✓
<b>C21ZV</b>	70 x 34.5 x 12.1 mm	250 x 122   48.6 x 23.7	B/W/R*	130 dpi	2x CR2450	✓	0-40 °C	✓
<b>C26ZV</b>	83 x 41 x 12.1 mm	296 x 152   60.1 x 30.7	B/W/R*	125 dpi	2x CR2450	✓	0-40 °C	✓
<b>C29ZV</b>	90 x 41 x 12.1 mm	296 x 128   66.9 x 29.1	B/W/R*	112 dpi	2x CR2450	✓	0-40 °C	✓
<b>C42ZV</b>	104.8 x 87 x 12.8 mm	400 x 300   84.8 x 63.6	B/W/R*	119 dpi	2x CR2450	✓	0-40 °C	✓
<b>C58ZV</b>	135.4 x 110 x 9 mm	648 x 480   118.8 x 88.2	B/W/R*	138 dpi	4x CR2430	✓	0-40 °C	X
<b>C75ZV</b>	180.8 x 121.8 x 9 mm	880 x 528   163.2 x 97.9	B/W/R*	137 dpi	4x CR2430	✓	0-40 °C	X
<b>C116ZV</b>	266.3 x 190 x 9 mm	960 x 640   244.5 x 163	B/W/R*	100 dpi	4x CR2430	✓	0-40 °C	X
<b>C133ZV</b>	298.3 x 225.5 x 9 mm	960 x 680   275.5 x 195.2	B/W/R*	88 dpi	4x CR2430	✓	0-40 °C	X
<b>C18ZB</b>	54.2 x 36.9 x 9.9 mm	224 x 168   36.1 x 27.1	B/W/R*	158 dpi	1x CR2450	✓	0-40 °C	✓
<b>C21ZB</b>	71 x 34.7 x 9.5 mm	250 x 122   48.6 x 23.7	B/W/R*	130 dpi	2x CR2430	✓	0-40 °C	✓
<b>C26ZB</b>	85 x 41 x 7.5 mm	296 x 152   60.1 x 30.7	B/W/R*	125 dpi	2x CR2430	✓	0-40 °C	✓
<b>C29ZB</b>	92 x 41.5 x 7.5 mm	296 x 128   66.9 x 29.1	B/W/R*	112 dpi	2x CR2430	✓	0-40 °C	✓
<b>C42ZB</b>	103.6 x 87 x 10.3 mm	400 x 300   84.8 x 63.6	B/W/R*	119 dpi	2x CR2450	✓	0-40 °C	✓
<b>C58ZB</b>	132 x 109 x 13 mm	648 x 480   118.8 x 88.2	B/W/R*	138 dpi	4x CR2450	✓	0-40 °C	✓
<b>C75ZB</b>	176.8 x 124.3 x 13 mm	800 x 480   163.2 x 97.9	B/W/R*	124 dpi	4x CR2450	✓	0-40 °C	✓
<b>E58ZV</b>	135.4 x 110 x 9 mm	600 x 448   114.9 x 85.8	B/W/R/G/BL/Y/O*	132 dpi	4x CR2430	✓	10-40 °C	X
<b>F73ZV</b>	180.8 x 121.8 x 9 mm	800 x 480   160 x 96	B/W/R/Y*	127 dpi	4x CR2450	✓	0-40 °C	X

\* B / W / R / G / BL / Y / O = black, white, red, green, blue, yellow, orange

### Key



Total size



Colour



Power supply |  
up to 5 years |  
exchangeable



Environmental  
temperature



Display size (px/mm)



Resolution



NFC



LED

### Main characteristics

- slim design
- on 2402 - 2480 MHz basis
- supports NFC
- controllable LEDs
- with ePaper display technology
- individual template design
- bidirectional, cable free communication
- encrypted data transfer
- operates in environmental temperatures between 0 and 40°C
- excellent legibility with high contrast
- active battery and system monitoring

Still have questions? Please write to us at [info@tronitag.com](mailto:info@tronitag.com)



**Dětská termobunda**

růžová/modrá/zelená, 74/80-122/128

**200 Kč** ~~899 Kč~~ Kč **699<sup>00</sup>**

**Mikrofleecová bunda**

chitovská, modrá, 110/116-150/164

**200 Kč** ~~599 Kč~~ Kč **399<sup>00</sup>**

**Dětské termokalhoty**

modré/řízové, 74/80-122/128

**200 Kč** ~~599 Kč~~ Kč **399<sup>00</sup>**

**Punčocháče 3 ks**

divočástečné, jednobarevné, 74/80

**100 Kč** ~~749 Kč~~ Kč **349<sup>00</sup>**



## Our BL and SL Range

The BL and SL range operate over a tried and tested bidirectional ZigBee transmission which has been in use for years for current Smarthome systems. This has the advantage that you can be sure through years of ZigBee protocol testing that disturbances by other systems are near eliminated.

Here too the BL and SL labels are differentiated by the front panel on the BL label offering further protection and the SL label without front panel to minimise reflection.

We are happy to advise you which system best suits your requirements and create for you a tailor made concept!

### BL / SL Characteristics

- supports NFC, QR and barcodes
- individual template design
- bidirectional, cable free communication
- encrypted data transfer
- excellent legibility with high contrast
- active battery and system monitoring
- wide range of accessories
- plug&play solution without a big IT infrastructure
- high availability solution through backup technology
- several pages which can be switched automatically or by remote control

2400 - 2483  
MHz /  
16 channels

Transmission

AES128  
- HTTPS

Encryption



Bidirectional



# BL / SL Range with ZigBee



BL15



BL21



BL29



BL42



BL58



BL75



BL125



SL15



SL21










SL29



Freezer / iP67 /  
BL29IF / BL29I

## Technical Details BL / SL Range

							
<b>BL15</b>	39.6 x 48.3 x 14.8 mm	152 x 152   27.6 x 27.6	B / W / R	140 dpi	1x CR2477	✓	5 - 40 °C
<b>BL21</b>	72 x 36.8 x 14.3 mm	250 x 122   48.5 x 23.8	B / W / R	131 dpi	2x CR2450	✓	5 - 40 °C
<b>BL29</b>	89.6 x 41.2 x 14.3 mm	296 x 128   66.9 x 29.1	B / W / R	112 dpi	2x CR2450	✓	5 - 40 °C
<b>BL29IF</b>	93 x 45 x 15.7 mm	296 x 128   66.9 x 29.1	B / W	112 dpi	2x CR2450	✓	-25 - 10 °C
<b>BL29I</b>	93 x 45 x 15.7 mm	296 x 128   66.9 x 29.1	B / W	112 dpi	2x CR2450	✓	5 - 40 °C
<b>BL42</b>	104 x 88.4 x 14.3 mm	400 x 300   84.4 x 63.6	B / W / R	120 dpi	3x CR2450	✓	5 - 40 °C
<b>BL58</b>	137.4 x 108 x 14.3 mm	600 x 448   120 x 89.3	B / W / R	128 dpi	4x CR2450	✓	5 - 40 °C
<b>BL75</b>	180 x 127 x 14.3 mm	640 x 384   97 x 161.6	B / W / R	100 dpi	3x CR2450	✓	5 - 40 °C
<b>BL125</b>	293.6 x 231.5 x 18 mm	1304 x 984   252.9 x 190	B / W / R	131 dpi	8x AAAA	✓	5 - 40 °C
<b>SL15</b>	42 x 35 x 12 mm	152 x 152   27.6 x 27.6	B / W / R	140 dpi	1x CR2450	✓	5 - 40 °C
<b>SL21</b>	64 x 35 x 12 mm	212 x 104   48.5 x 23.8	B / W / R	111 dpi	2x CR2450	✓	5 - 40 °C
<b>SL29</b>	88 x 40 x 12 mm	296 x 128   66.9 x 29.1	B / W / R	112 dpi	2x CR2450	✓	5 - 40 °C

### Key



Total size



Colour (B/W/R = black, white, red)



Power supply | up to 5 years | exchangeable



Environmental temperature



Display size (px/mm)



Resolution



NFC

### Main characteristics

- with ePaper display technology
- supports NFC
- individual template design
- bidirectional, cable free communication
- encrypted data transfer
- ZigBee
- operates in environmental temperatures between 0 and 40°C
- excellent legibility with high contrast
- active battery and system monitoring
- wide range of accessories

Still have questions? Please write to us at [info@tronitag.com](mailto:info@tronitag.com)



## Possible Applications

ESL, originally developed primarily for price labeling, enjoys great popularity when used in other areas too and offers additional value. ESL, also called ePaper, is now used in areas of production too for process structuring and in the field of logistics for stock identification. Alternatively, used as door signage or as a promotion on your bar, the structure of ESL systems offers a colourful palette of opportunities!

**See for yourself with the following examples of use:**



### Retail

- classic price labeling
- flash sales / special promotions
- support for stocktaking
- additional information e.g. sizes for clothing
- call up websites via QR codes or NFC



### Logistics

- display stock level
- pick by light
- display of items information
- automatic identification of hazardous materials and additional information



### Gastronomy

- reception signage
- buffet labeling
- table reservations
- allergen identification

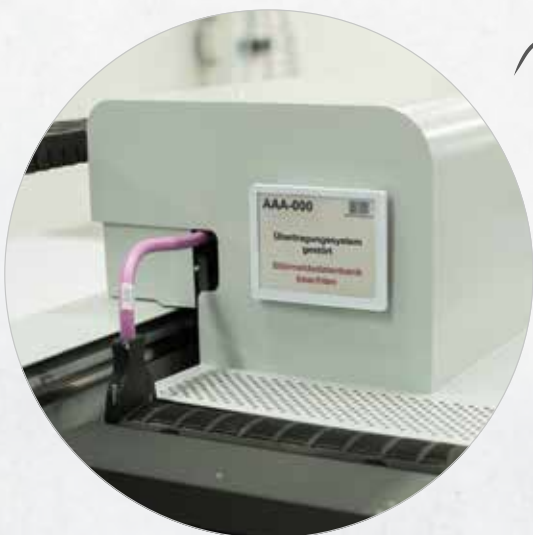
### Offices

- labeling of meeting / training rooms
- connection to administrative software
- training: instructor / participant names
- training rooms



### Production

- digital docket
- display of machine maintenance
- display of production steps
- warehouse identification





## Fixings for Every Setting

Regardless of the application, you can find the right fixings from us. We supply a versatile range of fixings for our ESL labels. Thanks to in house manufacture we can also produce bespoke solutions and be flexible to your requirements.



### Shelves

Included in our range are fixing rails for the following shelf types:

Adams shelves | Detroit shelves | Fortezza shelves, glass shelves | glass risers | Hansa-Mertens shelves | Hermes shelves | wooden shelves | ITAB shelves | Linde shelves | Metal shelves | Otto-Kind shelves | Siegel wire baskets | Storebest shelves | Tegometall shelves | Tego hanging baskets and stacking baskets | freezer cabinets | universal adhesive strips | Wanzl wire baskets | Wire-Tech wire shelves



### Pegwalls

Pegwall hook adapters for price labeling on pegwall hooks. The digital price labels are fixed to adapters and those then hung on the hooks. With the help of a guide rail already attached to the back, the angle of the pegwall hook adapter can be infinitely adjusted.



### Tables and Counters

Impact resistant table and counter display in PET-G hold your digital price label at the perfect reading angle. As a manufacturer we are also able to make customised displays alongside our standard range.

### Ceiling and Poster Rails

Hanging systems in PET-G for ceilings and poster rails.

We have different solutions in our range especially for large digital price signs or can make these to order.



### Floor Spaces

Freestanding price stands in strong materials for floor areas, specifically for large labels - flexible price labelling.

### Crates, Baskets & Other Fixings

Endless selection of fixing clips and displays.

From a simple stand to clips, hanging hooks and magnetic holders.





Your first step  
towards  
digitalisation!



Member of the VKF Renzel Group  **VKF Renzel**

troniTAG GmbH • Im Geer 15 • D-46419 Isselburg  
Tel.: +49 (0) 28 74 / 910-711 • info@tronitag.com • www.tronitag.com